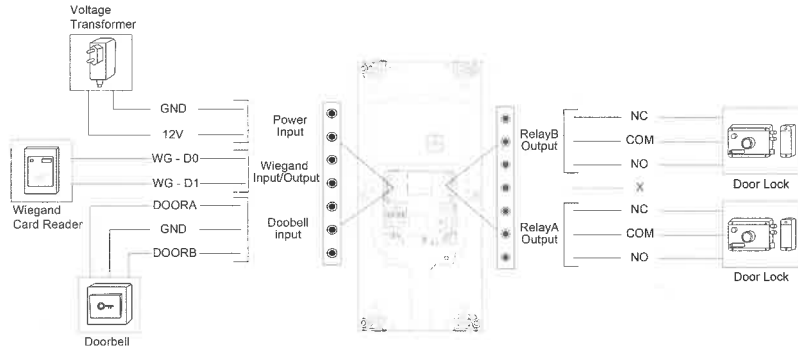


Device Wiring



Notice Information

Akuvox R20K firmware contains third-party open source software under the terms of the GNU General Public License (GPL). Akuvox is committed to meeting the requirements of the GNU General Public License (GPL) and will make all required source code available.

The source code of software under the terms of GNU GPL can be downloaded online: <http://www.akuvox.com/gpl>.

Information contained in this document is believed to be accurate and reliable at the time of printing. This document is subject to change without notice, any update to this document can be viewed on Akuvox's website: <http://www.akuvox.com> © Copyright 2020 Akuvox Ltd. All rights reserved.



AKUVOX (XIAMEN) NETWORKS CO., LTD.

ADD: 10/F, NO.56 GUANRI ROAD, SOFTWARE PARK II, XIAMEN 361009, CHINA
www.akuvox.com

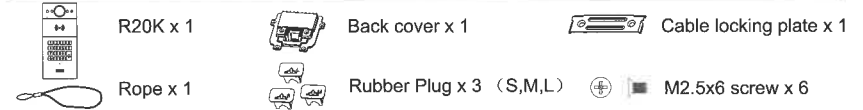


YS20000052

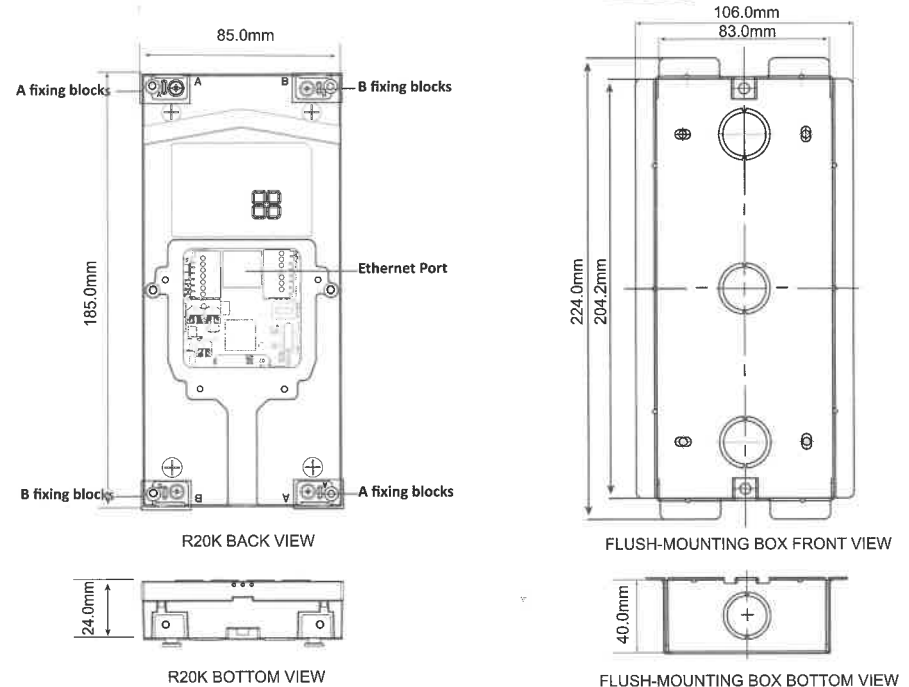
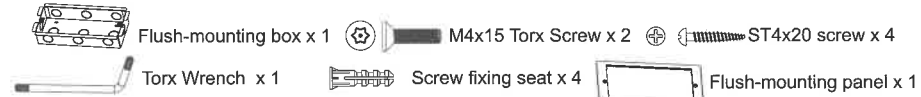
Unpacking

Before you begin using the device, please check the version you got and ensure that the following items are included in the shipped box:

Mainframe Accessories (Please find in device box) :



Flush-mounting Accessories :

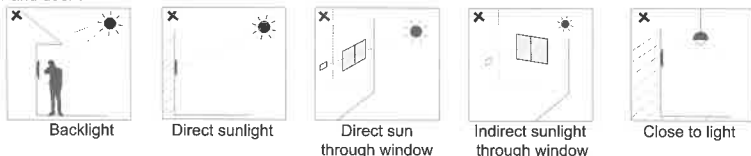


Installation Environment

Indoor and outdoor installation are supported.

If installing the device outdoors, please don't place device under direct sunlight, it will bring a bad effect or be broken with the high temperature.

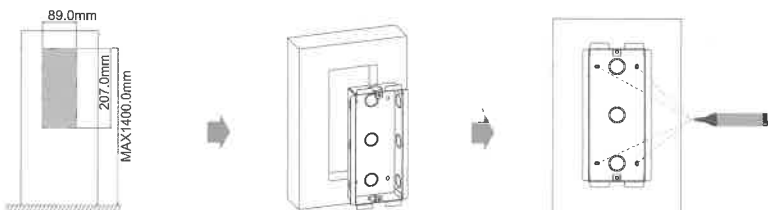
If installing the device indoors, please keep device at least 2 meters away from light, and at least 3 meters away from window and door.



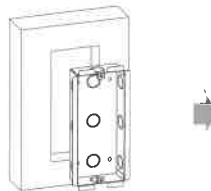
Flush-mounting Installation

Step1: Flush-mounting Box Installation

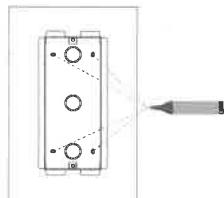
1. Normal Installation



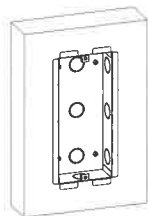
Cut a rectangular hole on the wall of the diameter of 89x207 mm and depth of 40 mm that can accommodate and through out all necessary cables.



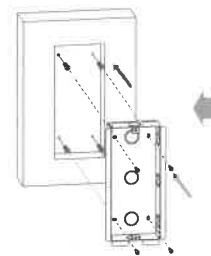
Insert the flush-mounting box into the hole.



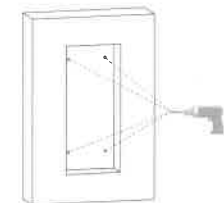
Mark the four holes of the wall flush-mounting box on the wall.



Finish the flush-mounting box installation.



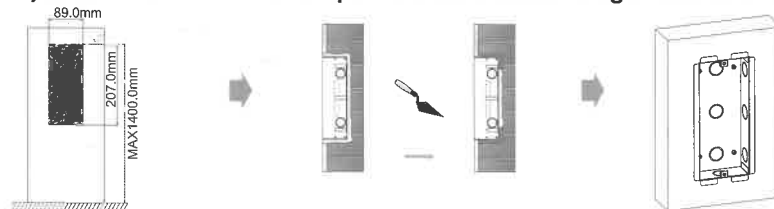
Insert the screw fixing seats into the hole you drilled before. Fix the flush-mounting box with four ST4x20 screws.



Take down the flush-mounting box, use a hand drill with 5 mm diameter bit to drill four screw holes with a depth of 25 mm at the marked positions.

2

2. Or you can choose another simple method without fixing ST4x20 screws

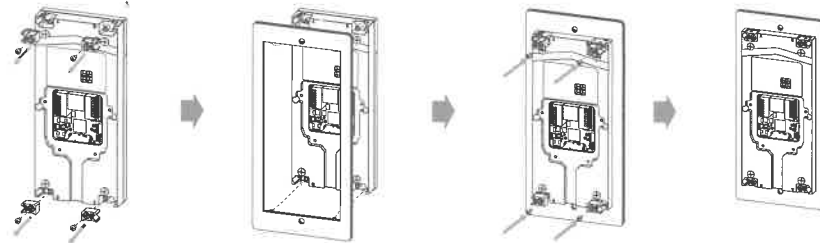


Cut a rectangular hole on the wall of the diameter of 89x207 mm and depth of 40 mm that can accommodate and through out all necessary cables.

Use cement or non-corrosive structural adhesives to fill the gap between the wall and flush-mounting box. Wait the adhesive material desiccation, go to the next step.

Finish the flush-mounting box installation.

Step2: Flush-mounting panel installation



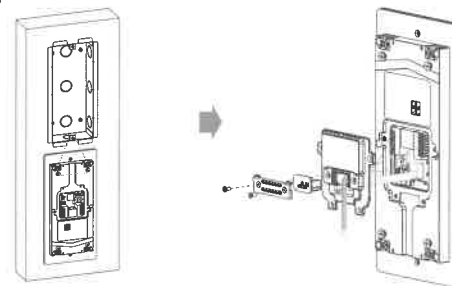
Remove four A/B fixing blocks on the back of the device.

The 4 bumps of the flush-mounting panel snap into the 4 grooves on the back of the device (the foam side faces the person).

Re-install four A/B fixing blocks (A-A, B-B) and lock the screws.

The device and the flush-mounting panel are installed.

Step3: Back Cover Installation



For convenient wiring, hang R20K on the flush-mounting box with rope.

Make cables go through the back cover, connecting to the corresponding interfaces of the main board. Select a suitable size rubber plug to push all the cables into the back cover. Fix cable locking plate to the back cover with two M2.5x6 screws.

Note: In the case of less than 6 signal cables, use S-size rubber plugs. In the case of 7 to 10 signal cables, use M-size rubber plugs. When there are more than 11 signal cables Please use L-size wiring rubber plug.

3